

GREAT AMERICAN LAND MANAGEMENT, INC.

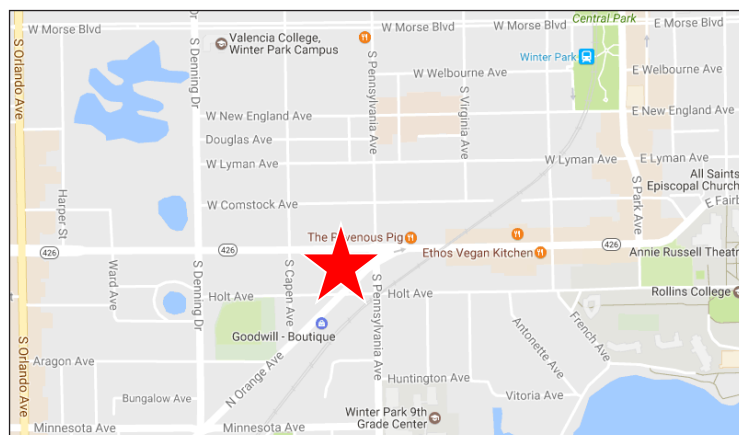
*Leasing Now in Winter Park!
Remodeled & Available Immediately*

660 W. Fairbanks Avenue

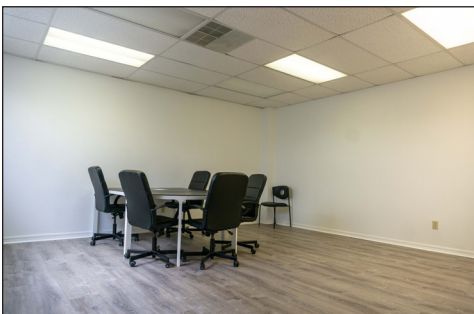
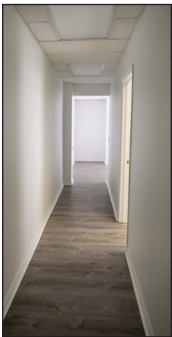
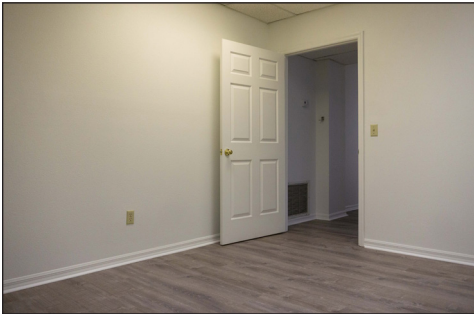
- 1,150± SF Office Space
- \$33.50 psf Modified Gross
- Zoned C-3 • Utilities Included
- Monument Signage



- Conveniently located near the corner of Fairbanks Avenue and Orange Avenue
- Frontage on Fairbanks Avenue
- Close to Downtown Winter Park
- Easy Access to Orlando Avenue (17-92)
- Just Blocks from Rollins College
- Short Walk to Prestigious Park Avenue
- Just Blocks from the Winter Park Railroad Station
- 1.5 miles from Interstate 4



For more information, call 407.645.4131.



West Fairbanks Avenue

